

**Xcalibur**  
SMART MAPPING

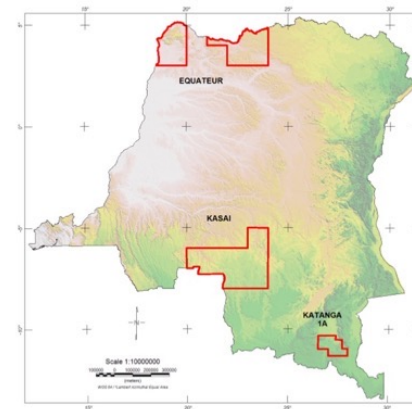
DRC | Airborne Geophysical Survey  
of Katanga & Kasai

# Country Mapping programme | Case Study

## THE PROJECT

- Remote Sensing analysis
- Airborne Geophysics:
  - Magnetics/Radiometrics
    - Line spacing: 200 m
    - 3 blocks: Katanga, Kasai & Equateur – Total survey size: +960,000-line km
  - Gravity
    - Line spacing: 2,000 m
    - 2 blocks: Kasai & Equateur – Total survey size: +90,000-line km
  - EM
    - Line spacing: 200 m (20% of target areas)
    - 2 blocks: Kasai & Equateur – Total survey size: +180,000-line km
- Field work in block Kasai (Geology and geochemistry for Groundtruthing)
- Training, Marketing and Geoportal

## BLOCKS



## RESULTS

